

**Anti-SLC2A1 Picoband Antibody**  
**Catalog # ABO12125****Specification**

---

**Anti-SLC2A1 Picoband Antibody - Product Information**

Application	WB, IHC-P, IHC-F, ICC
Primary Accession	<a href="#">P11166</a>
Host	Rabbit
Reactivity	Human, Mouse, Rat
Clonality	Polyclonal
Format	Lyophilized

**Description**

Rabbit IgG polyclonal antibody for Solute carrier family 2, facilitated glucose transporter member 1 (SLC2A1) detection. Tested with WB, IHC-P, IHC-F, ICC in Human;Mouse;Rat.

**Reconstitution**

Add 0.2ml of distilled water will yield a concentration of 500ug/ml.

**Anti-SLC2A1 Picoband Antibody - Additional Information**

**Gene ID** 6513

**Other Names**

Solute carrier family 2, facilitated glucose transporter member 1, Glucose transporter type 1, erythrocyte/brain, GLUT-1, HepG2 glucose transporter, SLC2A1, GLUT1

**Calculated MW**

54084 MW KDa

**Application Details**

Immunocytochemistry , 0.5-1 µg/ml, Human, -<br>Immunohistochemistry(Frozen Section), 0.5-1 µg/ml, Human, -<br>Immunohistochemistry(Paraffin-embedded Section), 0.5-1 µg/ml, Human, Mouse, Rat, By Heat<br>Western blot, 0.1-0.5 µg/ml, Human<br>

**Subcellular Localization**

Cell membrane; Multi-pass membrane protein. Melanosome. Localizes primarily at the cell surface. Identified by mass spectrometry in melanosome fractions from stage I to stage IV.

**Tissue Specificity**

Detected in erythrocytes (at protein level). Expressed at variable levels in many human tissues. .

**Protein Name**

Solute carrier family 2, facilitated glucose transporter member 1

**Contents**

Each vial contains 5mg BSA, 0.9mg NaCl, 0.2mg Na2HPO4, 0.05mg NaN3.

**Immunogen**

E.coli-derived human SLC2A1 recombinant protein (Position: R92-V492). Human SLC2A1 shares

98% and 98.3% amino acid (aa) sequence identity with mouse and rat SLC2A1, respectively.

#### **Purification**

Immunogen affinity purified.

#### **Cross Reactivity**

No cross reactivity with other proteins

#### **Storage**

**At -20°C for one year. After reconstitution, at 4°C for one month. It can also be aliquotted and stored frozen at -20°C for a longer time. Avoid repeated freezing and thawing.**

#### **Sequence Similarities**

Belongs to the major facilitator superfamily. Sugar transporter (TC 2.A.1.1) family. Glucose transporter subfamily.

### **Anti-SLC2A1 Picoband Antibody - Protein Information**

**Name** SLC2A1 ([HGNC:11005](#))

#### **Function**

Facilitative glucose transporter, which is responsible for constitutive or basal glucose uptake (PubMed: <a href="http://www.uniprot.org/citations/10227690" target="\_blank">10227690</a>, PubMed: <a href="http://www.uniprot.org/citations/10954735" target="\_blank">10954735</a>, PubMed: <a href="http://www.uniprot.org/citations/18245775" target="\_blank">18245775</a>, PubMed: <a href="http://www.uniprot.org/citations/19449892" target="\_blank">19449892</a>, PubMed: <a href="http://www.uniprot.org/citations/25982116" target="\_blank">25982116</a>, PubMed: <a href="http://www.uniprot.org/citations/27078104" target="\_blank">27078104</a>, PubMed: <a href="http://www.uniprot.org/citations/32860739" target="\_blank">32860739</a>). Has a very broad substrate specificity; can transport a wide range of aldoses including both pentoses and hexoses (PubMed: <a href="http://www.uniprot.org/citations/18245775" target="\_blank">18245775</a>, PubMed: <a href="http://www.uniprot.org/citations/19449892" target="\_blank">19449892</a>). Most important energy carrier of the brain: present at the blood-brain barrier and assures the energy- independent, facilitative transport of glucose into the brain (PubMed: <a href="http://www.uniprot.org/citations/10227690" target="\_blank">10227690</a>). In association with BSG and NXNL1, promotes retinal cone survival by increasing glucose uptake into photoreceptors (By similarity). Required for mesendoderm differentiation (By similarity).

#### **Cellular Location**

Cell membrane; Multi-pass membrane protein. Melanosome. Photoreceptor inner segment {ECO:0000250|UniProtKB:P17809}. Note=Localizes primarily at the cell surface (PubMed:18245775, PubMed:19449892, PubMed:23219802, PubMed:24847886, PubMed:25982116). Identified by mass spectrometry in melanosome fractions from stage I to stage IV (PubMed:17081065)

#### **Tissue Location**

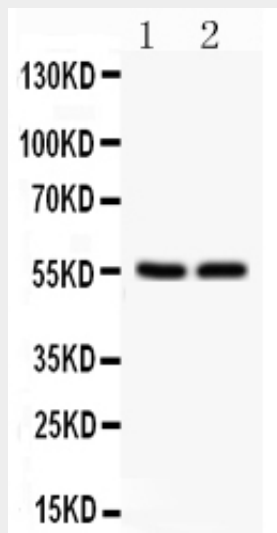
Detected in erythrocytes (at protein level). Expressed at variable levels in many human tissues

### **Anti-SLC2A1 Picoband Antibody - Protocols**

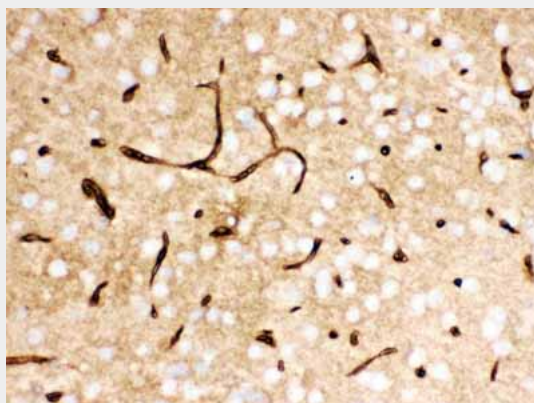
Provided below are standard protocols that you may find useful for product applications.

- [Western Blot](#)
- [Blocking Peptides](#)
- [Dot Blot](#)
- [Immunohistochemistry](#)
- [Immunofluorescence](#)
- [Immunoprecipitation](#)
- [Flow Cytometry](#)
- [Cell Culture](#)

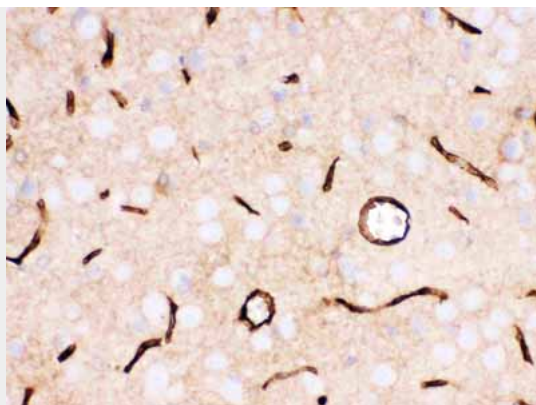
#### Anti-SLC2A1 Picoband Antibody - Images



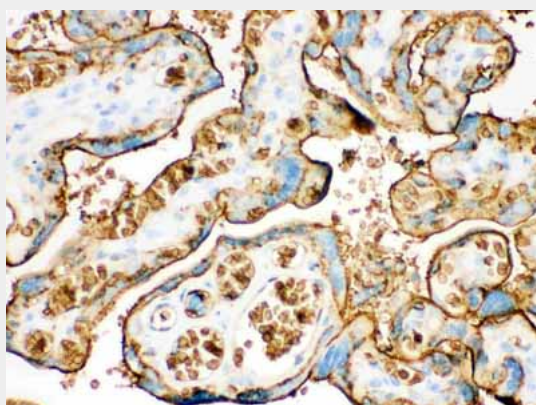
Anti- SLC2A1 Picoband antibody, ABO12125, Western blotting  
All lanes: Anti SLC2A1 (ABO12125) at 0.5ug/ml  
Lane 1: HELA Whole Cell Lysate at 40ug  
Lane 2: JURKAT Whole Cell Lysate at 40ug  
Predicted bind size: 55KD  
Observed bind size: 55KD



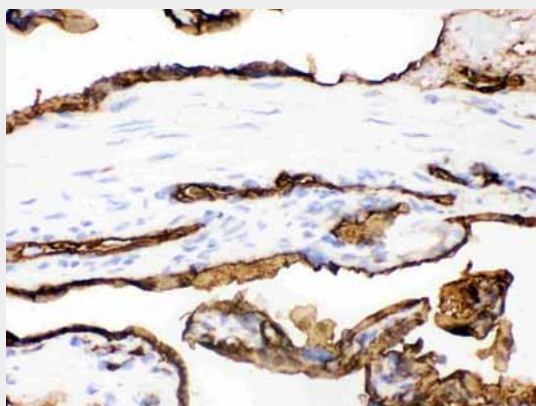
Anti- SLC2A1 Picoband antibody, ABO12125, IHC(P)  
IHC(P): Mouse Brain Tissue



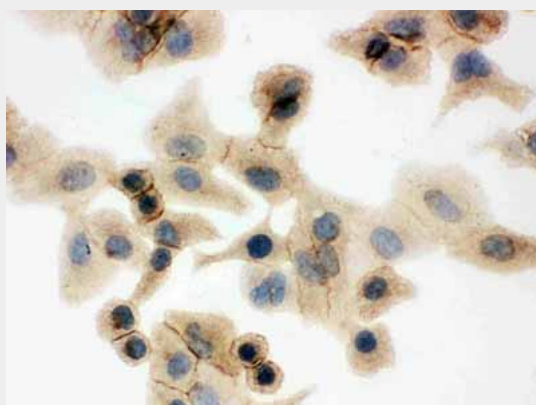
Anti- SLC2A1 Picoband antibody, ABO12125, IHC(P)IHC(P): Rat Brain Tissue



Anti- SLC2A1 Picoband antibody, ABO12125, IHC(P)IHC(P): Human Placenta Tissue



Anti- SLC2A1 Picoband antibody, ABO12125, IHC(F)IHC(F): Human Placenta Tissue



Anti- SLC2A1 Picoband antibody, ABO12125, ICCICC: A549 Cell

#### **Anti-SLC2A1 Picoband Antibody - Background**

GLUT1, also known as SLC2A1, is a major glucose transporter in the mammalian blood-brain barrier whose gene is mapped to 1p35-p31.3 and contains 10 exons. It is present at high levels in primate erythrocytes and brain endothelial cells. Not only can transport dehydroascorbic acid (the oxidized form of vitamin C) into the brain, GLUT1 is also likely to contribute to HTLV-associated disorders through interacting with HTLV envelope glycoproteins. Functionally, GLUT1 deficiency causes a decrease in embryonic glucose uptake and apoptosis, which may be involved in diabetic embryopathy, by contrast, an increased expression of GLUT1 in some malignant tumors may suggest a role for glucose-derivative tracers to detect in vivo thyroid cancer metastases by positron-emission tomography scanning.